



2018 Annual Report

Building Bright Futures

ERC Resource & Referral, Inc., d/b/a Child Care Aware® of Eastern Kansas supports the development & early education of children by improving access to resources for families, including high-quality child care options.



Building Bright Futures...

Child Care Aware® of Eastern Kansas operates the statewide Parent Resource Center, as well as serves child care providers, families, businesses & communities in the 33 highlighted counties.

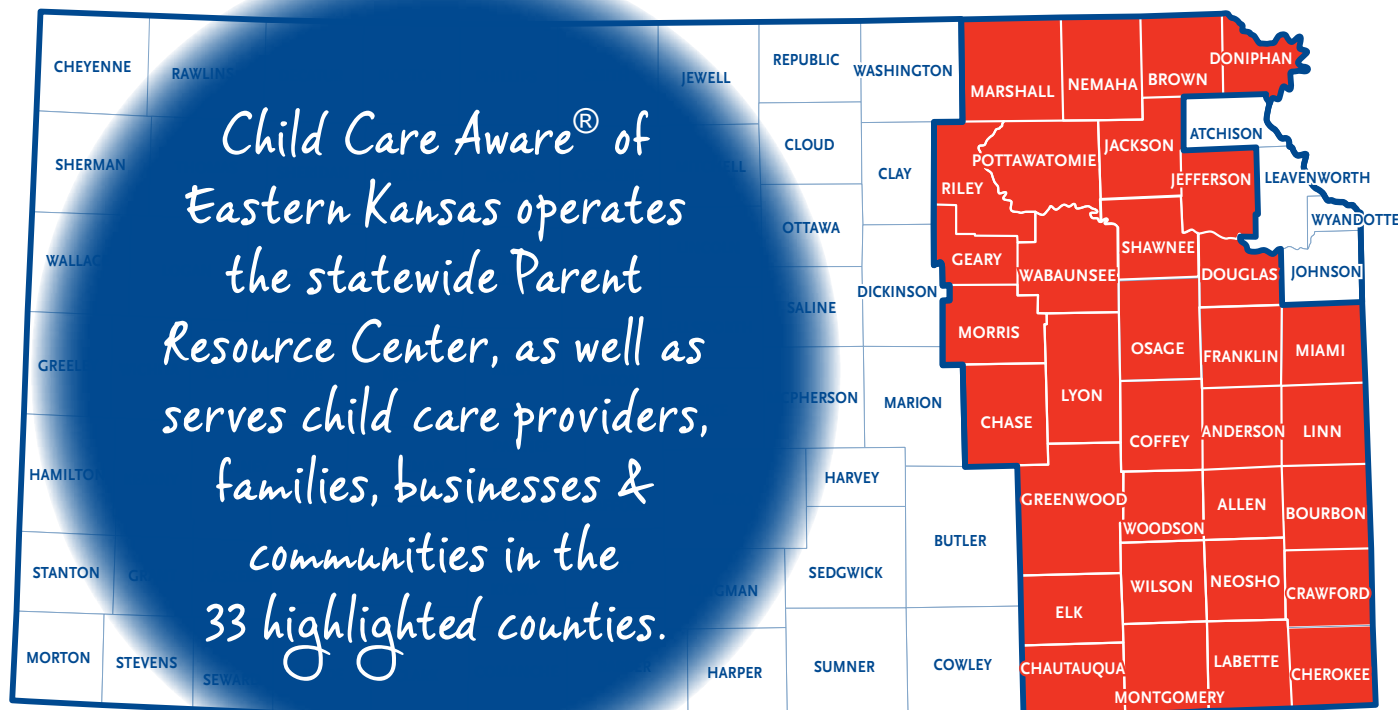


Table of Contents

Table of Contents	
Service Area Delivery Map.....	1
Letter from the Executive Director.....	2
Building Bright Futures with Child Care Providers.....	3
Building Bright Futures with Families.....	5
Building Bright Futures with Communities & Businesses.....	6
Building Bright Futures with YOU.....	7
Our People Help to Build Bright Futures.....	8
2018 Financials	
Agency Funding.....	9

ERC Resource & Referral, Inc., d/b/a Child Care Aware® of Eastern Kansas

Main Office: 1100 SW Wanamaker Rd., Ste. 201, Topeka, Kansas 66604

785-357-5171 phone • 1-877-678-2548 toll free • 785-357-1813 fax

<https://east.ks.childcareaware.org>

Letter from the Executive Director...

Dear friend,

I am so proud of all that was accomplished by our agency in 2018 on behalf of the children, families and child care programs we serve. The dedicated staff worked tirelessly in our efforts to ensure that every child has access to a high-quality early learning experience that prepares them for success in school and in life. Even more child care programs benefited from expanded online course offerings, as well as our face-to-face classes. On-site coaching opportunities provided child care programs with the opportunity to reflect on their environments and teaching practices, while making progress on their path of continued quality improvement. Early childhood educators were able to strengthen and expand their skills as they built strong relationships with children and families in their care.

Families served through the Parent Resource Center could depend on a compassionate, caring staff person to assist them in their child care search. The Successful Connections program was new to the agency in 2018 and we were able to significantly increase the number of families referred to home visitation programs in Shawnee County in this short time.

The 2018 Designers' Showhouse was purchased by the agency, remodeled and sold after spring tours, allowing the opportunity to make this grassroots fundraiser generate even more revenue for agency programs and services benefiting children and families through its sale. As 2018 was coming to an end, we were able to once again purchase a residential property to use as the 2019 Designers' Showhouse following the successful model used in 2018. We are so grateful for the significant support from the community, area businesses and the many wonderful volunteers who gave (and continue to give) freely of their time and talents to benefit our cause.

We know that our continued success is only possible because of the support of others. It is through our partnerships with volunteers, donors, area businesses, community agencies and area foundations that all come together to make great things happen! Because of you, local investments in early childhood made a measurable impact this year. Lives have been positively changed, and we know that the impact of early investments provides an exponential return.

Our mission guides our way and we see progress; however, there is still much to do. As we move into the second half of 2019, the board and staff are working with an outside consultant to help chart our path for the next three years. We know that this process may challenge us to think in different ways, consider bold actions, and be willing to let go of some things so that we have the capacity to grasp new opportunities. We see exciting opportunities on the horizon as we work with others who share our passion for making lives better for children and families. Through strategic partnerships, we look forward to charting a course that leads to meeting the emerging needs of the early childhood field and the children and families we serve.

As always, we invite you to learn more. Contact me to take a tour, participate in a program, hear about a project under development, or to talk about how you can become more involved as a volunteer or advocate. We are truly grateful!

Sincerely,
Reva Wywadis

Reva Wywadis, Executive Director



Building Bright Futures with Child Care Providers...

Child Care Aware® of Eastern Kansas helped build bright futures for child care providers by offering access to resources and information, professional development opportunities and coaching opportunities.

In 2018...

- **1,677** child care programs throughout the 33-county region and their staff were served by the agency.
- Over **188** professional development sessions with a total of **1,896** attendees helped child care providers and teachers improve their quality of care and meet licensing requirements through face-to-face and online learning options.
- **55** child care center directors and administrators from **33** child care centers participated in trainings and peer learning through Director's Toolbox sessions offered by the agency. One of these sessions held in September of 2018, "Director's Toolbox: The State of Early Childhood in Kansas," brought together several partnering agencies. Kansas Action for Children shared public policy updates. The Department of Children and Families provided updates about the Child Care Development Fund. The Kansas Department of Health and Environment explained regulatory updates. Time was also spent discussing how child care directors can incorporate regulatory and policy changes into their programs.
- Multiple child care providers throughout the region benefited from special 12-month coaching programs focused on early literacy development, infant/toddler care giving, school readiness and teacher/child interactions. Over **950** children benefited from their child care provider's or teacher's participation in one or more of these programs, with a large percentage of those child care programs making measurable quality improvement during the year.
- The agency co-hosted a conference in southeast Kansas with Allen Community College, "Fired Up or Burned Out?," featuring keynote Holly Elissa on Oct. 6, 2018. This event focused on self-care and finding ways that participants can reclaim their joy and make work fun again. Attendance for this event totaled **73** early childhood professionals.

"I visited a classroom teacher after she took the 'Fingerplay FUN-damentals' class. She told me she already started doing a fingerplay song with her toddlers. I asked her which one was she doing with the toddlers. As she started to show me, the toddlers surrounded us and started to join in the finger play."

**-Early Care & Education Specialist from
Child Care Aware® of Eastern Kansas**

- A new website for Child Care Aware® of Eastern Kansas was officially launched May 18, 2018. The original website content was edited and the layout was streamlined to make it easier to navigate with the most newsworthy and utilized content and links at the forefront. The child care provider section received the most reformatting, cutting out impertinent content and applying updates to the information. This section was rearranged, with clearly labeled sections and tabs to simplify a child care provider's search for information or those seeking to get into the field.
- The agency hosted its first Marketing Roundtable event on Nov. 15, 2018. Child care providers and directors attended and participated in discussions led by area experts to help them grow as a business. Topics were presented with discussion led by the following:
 - Media- Regan Porter, WIBW-TV
 - Social Media- Laura Burton, Kansas Children's Discovery Center & Co-Founder of the Social Media Club of Topeka
 - Websites- Alex Reilly, MB Piland Advertising & Marketing
 - Print Materials & Promotional Items- Eryn Allen, Child Care Aware® of Eastern Kansas

“Thank you for this amazing opportunity that you gave us to further our students’ social and academic education.”

-Child Care Provider & Program Participant



Building Bright Futures with Families...

Child Care Aware® of Eastern Kansas helped build bright futures for families by connecting them with the resources and information to benefit their family. The Parent Resource Center provided families with information about child care in their area, as well as tips and resources to assist with their child care search. Referrals were accessed by calling a toll-free number or through an online child care search. By having access to child care options, families were able to retain their employment in the workforce.

In 2018...

- A total of **14,568** child care referrals were completed through the Child Care Aware® of Kansas Parent Resource Center operated by Child Care Aware® of Eastern Kansas.
- **8,488** families used the Parent Resource Center, either by calling or utilizing the online service.
- **11,213** children were served through the Parent Resource Center, either by calling or utilizing the online service.
- Families who contacted the agency for child care referrals were given access to community information about other programs and support services in addition to their referral lists. These support services include information about home visitations, child screenings and health agencies.
- The Successful Connections program was a newly adopted program in January of 2018 by Child Care Aware® of Eastern Kansas. Two staff members provided support for pregnant women and families of new babies by offering community resources that could assist them in being more successful parents. A third staff member was added in December of 2018. The majority of the referrals Successful Connections receive are from Stormont Vail Health and OBGYN offices in Shawnee County. Referrals are also made by a variety of other community partners. During 2018, Successful Connections met with **981** pregnant women, women that had just given birth, or families.



“This service has been amazing and very helpful. Every person that I have talked with has done a great job in helping me get what I need. Thank you so much.”

**-Parent Resource
Center Client**

Building Bright Futures with Communities & Businesses...

Child Care Aware® of Eastern Kansas shared supply-and-demand data with communities and businesses to help guide economic development efforts in their area. Communities can not attract and retain businesses and a qualified workforce without the capacity to provide child care for those families that need it.

In 2018...

- On June 5, 2018, Child Care Aware® of Eastern Kansas participated in what would be the last Topeka Gives event hosted by the Topeka Community Foundation. This “fun day of giving” not only allowed the agency to raise additional funds, but it also offered the opportunity to connect with other area nonprofits and hundreds of community members. It was a terrific networking event that allowed the agency to share its mission with many. The 2018 Topeka Gives event had **165** participating nonprofit organizations.
- Agency staff participated in various health fairs, back-to-school fairs, job fairs and other events throughout the region to share information regarding high-quality early childhood education topics, as well as to support communities, local businesses and families.
- Child Care Aware® of Eastern Kansas purchased the 2018 Designers’ Showhouse for the first time in the agency’s history. The home, located at 1551 SW Westover Road in Topeka, was completely renovated and opened for public tours and events. Following the wrap-up of the spring fundraiser, the house was formally listed and sold. Proceeds included ticket sales, events, sponsorships and the sale of the home, which supported agency programs and services.
- Over **100** guests attended a Volunteer Appreciation Event & 40th Anniversary Celebration on Oct. 12, 2018. Attendees included those who volunteered for the agency in that past year, community partners/supporters, individual donors and underwriters. Awards were given to Junior League of Topeka, Child Care Aware® of Kansas, Kansas Children’s Cabinet, United Way of Greater Topeka, United Way of Douglas County, Topeka Community Foundation, Kansas Health Foundation and Capitol Federal Foundation® for their continued support and contributions to the agency. A video representation of the agency’s mission was created and premiered at this event. The video’s content focused on displaying the importance of high-quality child care and early childhood education, as well as services offered.
- IRIS (Integrated Referral and Intake System) is a web-based community referral system allowing community partners to easily make referrals to other partnering agencies. This system allows for referrals to happen quicker among a community. Shawnee County was selected to be one of three communities in the state to pilot this referral system. By utilizing the IRIS system, the Successful Connections program is able to make referrals while partnering agencies are able to receive referrals and track progress of the referrals.



Building Bright Futures with YOU... Get Involved!

Because much of the funding for child care resource and referral services is federal and state funded, it is important that parents, child care providers, community stakeholders and business leaders understand their role in shaping public policy through advocacy efforts. Additionally, local government's decisions can also impact the availability and accessibility of child care for families.

Research-Based Uniform Messages

K-12 Education

Studies show that early childhood programs are the BEST way to support improved academic outcomes in K-12. Children who participate in high-quality early childhood education programs are far more likely to enter kindergarten ready to learn, read at grade level by third grade, and graduate from high school or even college. (*Gormley et al, 2005; Belfield et al, 2006; Barnett & Masse, 2007*)

Brain Development

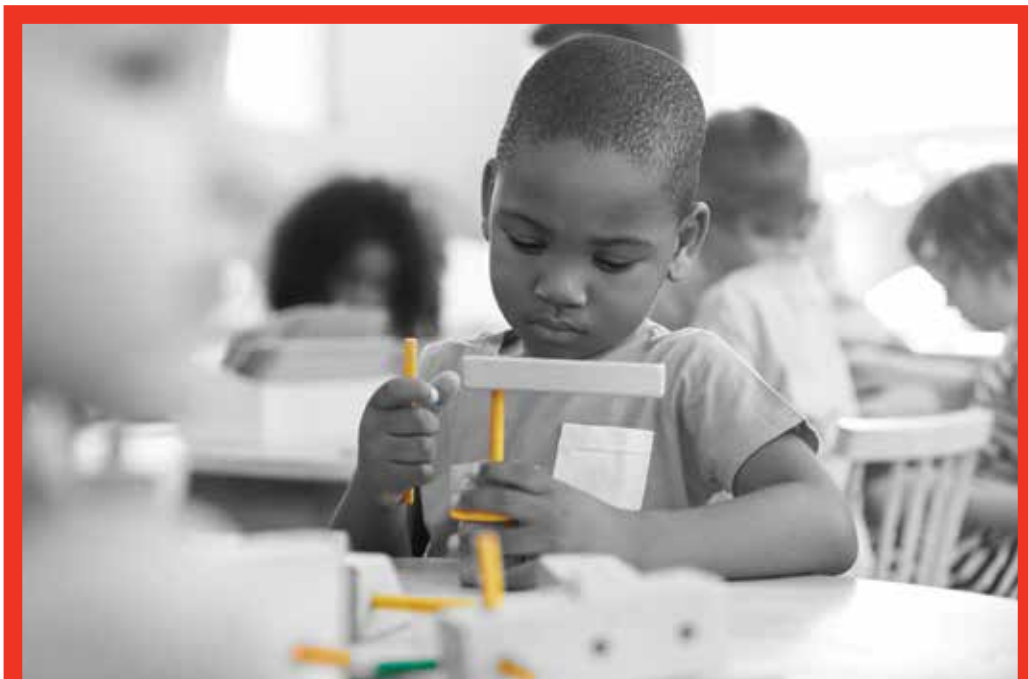
Ninety percent of a child's brain development occurs before age 5. High-quality early childhood services reach children during a crucial period when foundational brain architecture is formed and experience shapes social competency, cognitive ability and mental health. (*Mustard, 2008*)

Return on Investment

Research shows that for every \$1 invested in high-quality early childhood programs, society will save \$7 down the road in the form of reduced demand on the social welfare system, decreased juvenile crime and improved participation in the economy. (*Calman & Tarr-Whelan, 2005*)

Public Policy & Advocacy

Engaging others in supporting public policy that supports children and families is key to the success of the agency and those it serves. Child Care Aware® of Eastern Kansas continues to work collaboratively with other early childhood partners to highlight the importance of high-quality child care options for all families. As policy matters arise at the national, state or local level, the agency will continue to work to share information and employ creative strategies for effective advocacy for young children and their families.



Our People Help to Build Bright Futures...

2018 Board of Directors

Cora Spencer, *President*
Kathleen Heaney, *President-Elect*
Ashley All, *Secretary*
Lori Downing, *Treasurer*
Jane Tilghman, *Treasurer-Elect*
Beth Nelson, *Immediate Past President*
Lucinda Anstaett
Jared Bixby
Joshua Decker
Donna Doel
Joleen Klausman
Debra Ricks
Jamie Stafford
Liz Steffen
Krystal Yegon



Photo by Don Brent Photography & Imaging Inc.
Front row, from left: Beth Nelson, Debra Ricks, Jane Tilghman, Lucinda Anstaett, Liz Steffen
Second row on steps, from left: Lori Downing, Donna Doel
Back row, from left: Cora Spencer, Joleen Klausman, Joshua Decker, Jamie Stafford, Kathleen Heaney
Not pictured: Ashley All, Jared Bixby, Krystal Yegon

Staff Members

(as of December 2018)

Reva Wywadis, *Executive Director*
Becky Meyer, *Accountant*
Eryn Allen, *Marketing & Communications Coordinator*
Jamie Harrison, *Data Specialist*
Sarai Reyes, *Administrative Assistant & Bilingual Resource Specialist*
Laurie Pigg, *Parent Resource Center Manager*
Lori Boos, Billie Segrist, *Resource Specialists*
Marie Treichel, Renee Wohletz, *Provider Services Managers*
Grace Cott, Audrey Danielson, Deb Danielson, Michelle Gilbert, Talia Juiliano, Jennifer Pishny, Rebecca Quigley, Karen Rogenmoser, *Early Care & Education Specialists*
Jane Redger, Nancy Rohr, Tori Utz, *Successful Connections Family Resource Specialists*
Megan Smith, Debbie Thomas, *Links to Quality Community Consultants*
Stephanie Prue, *Library Resource Specialist*



Photo by Don Brent Photography & Imaging Inc.
Front row, from left: Reva Wywadis, Sarai Reyes, Deb Danielson, Nancy Rohr, Rebecca Quigley, Debra McClelland, Karen Rogenmoser
Second row on steps, from left: Laurie Pigg, Renee Wohletz, Stephanie Prue, Marie Treichel
Back row, from left: Michelle Gilbert, Grace Cott, Jane Redger, Jennifer Pishny, Hope Williams, Lori Boos, Billie Segrist
Not pictured: Becky Meyer, Eryn Allen, Jamie Harrison, Audrey Danielson, Talia Juiliano, Megan Smith, Debbie Thomas, Tori Utz

2018 Financials

Statement of Financial Position

December 31, 2018

Assets	2018
Cash & Cash Equivalents	\$ 420,996
Receivables	141,681
Investments	149,678
Property Held for Sale	348,206
Other	79,734
Total Assets	1,140,295
Liabilities & Net Assets	
Accounts & Notes Payable	154,023
Accrued Expenses	87,289
Unearned Revenue	12,025
Total Liabilities	253,337
Without Donor Restrictions	672,483
With Donor Restrictions	214,475
Total Net Assets	886,958
Total Liabilities & Net Assets	\$ 1,140,295

Statement of Activities

Year Ended December 31, 2018

Without Donor Restrictions

Revenues

Grant & Contract Income

Child Care Aware® of Kansas	\$ 515,186
Capital Area Successful Start	591,692
United Way	137,707
Other Grants or Programs	65,638

Other Revenue

Showhouse- net of expenses	69,303
Provider Training	25,717
Donations & Contributions	80,495
Other Revenue	10,988
Total Revenues	1,496,726

Expenses

Program Services	1,187,452
Supporting Services	228,663
Total Expenses	1,416,115

Change in Net Assets Without Donor Restrictions

\$ 80,611

With Donor Restrictions

Contributions & Program Revenue	520
Net Assets Released From Restrictions	(2,220)

Change in Net Assets With Donor Restrictions

(1,700)

Change in Total Net Assets

78,911

Net Assets at Beginning of Year

808,047

Net Assets at End of Year

\$ 886,958

Agency Funding

The agency is supported through a variety of **grants, contracts and fundraising efforts**, including:

- Kansas Department for Children & Families through Child Care Aware® of Kansas
- Kansas Children's Cabinet
- Topeka Community Foundation
- Douglas County Community Foundation
- Kansas Health Foundation
- Kansas Association for the Education of Young Children
- United Way of Greater Topeka
- United Way of Douglas County
- Individual Donor Support
- Support from Area Businesses & Corporations
- Designers' Showhouse Fundraiser